



**PHILADELPHIA, PA**  
 5 Great Valley Parkway, Suite 350  
 Malvern, PA 19355-1478  
 tel 610.251.6851  
 fax 610.903.4287  
**Contact: Steve Werner**  
 swerner@projectnavigator.com

**WESTCHESTER, NY**  
 tel 917.653.7570  
 fax 917.677.8804  
**Contact: Elizabeth Schell**  
 eschell@projectnavigator.com

**RALEIGH, NC**  
 tel 919.539.1928  
 fax 919.882.1470  
**Contact: Bob Piniewski**  
 bobp@projectnavigator.com



**LOS ANGELES, CA**  
 One Pointe Drive, Suite 320  
 Brea, CA 92821  
 tel 714.388.1800  
 fax 714.388.1839  
**Contact: Ian Webster**  
 iwebster@projectnavigator.com

**SAN FRANCISCO, CA**  
 1255 Treat Blvd., Suite 300  
 Walnut Creek, CA 94597  
 tel 925.472.6847  
 fax 925.407.2911  
**Contact: Josh Teves**  
 jteves@projectnavigator.com

**HOUSTON, TX**  
 10497 Town and Country Way, Suite 830  
 Houston, TX 77024  
 tel 713.468.5004  
 fax 713.468.4515  
**Contact: Mark Landress**  
 mlandress@projectnavigator.com

## Services

- Multi-party Site Management and Coordination
- Superfund and RCRA Sites
- Site Assessments
- Design and Construction Oversight
- Strategy and Planning at Complex Project Sites
- Sediment & Sludges Management
- Regulatory Negotiations
- Risk Based Closures
- Cost and Schedule Controls
- Bidding, RFPs, and Resource Selection
- Groundwater Planning and Management
- Landfill Remediation
- Health and Safety
- Community Relations
- Brownfields and Redevelopment (Land Reuse Planning)
- Litigation Support and Expert Witness
- Web-Enabled Project Management
- Data and Information Management
- Visualizations: GIS Analysis, 3D Graphics and Site Conceptual Models

## Websites

- PNL-A.COM**  
Delivers management solutions at complex environmental remediation projects on the East Coast.
- PROJECTNAVIGATOR.COM**  
Delivers management solutions at complex environmental remediation projects on the West and Gulf Coasts.
- PROJECTTOOLBOX.COM**  
A secure online project management tool.
- VISUAL-NAVIGATOR.COM**  
Provides technically rigorous visuals, graphics and animations.
- SLUDGESANDSEDIMENTS.COM**  
Provides sediment solutions at complex project sites.
- PRPBLOG.COM**  
An online project management tool that geolocates videos and information about your project.



## Short Statement of Qualifications

www.PNL-A.com

### Project Management

### Project Strategy and Planning Services

### Design and Construction Oversight

### Risk Management and Remediation

### Stakeholder Alignment at Complex Remediation Projects

### Technically Rigorous Visualization



Stakeholders > Vision > Creativity > Solutions > Success

## Project Navigator-Atlantic



Project Navigator – Atlantic (PNA) is the East Coast operating arm of Project Navigator, Ltd. (PNL). PNA is an environmental knowledge, risk and resource management company. Our project managers, engineers and scientists have developed a strong track record for creative problem solving.

Our core competence is environmental engineering and remediation, and our primary service is controlling the strategic direction of demanding projects. We have demonstrated these capabilities at major Superfund projects. Project Navigator has had lead project management responsibilities at more than ten major Superfund sites where project costs have cumulatively exceeded \$200MM.

Project Navigator first helps our clients with planning and logistics, and then assists with successful design and remediation phases. We provide scoping, bidding and procurement services to ensure that our client retains the appropriate control and project resources.

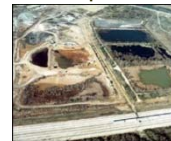
We have a culture of leveraging the use of data and information and negotiating cost effective solutions with regulatory entities. Project Navigator has a strong track record of working with project stakeholders to develop creative solutions, which ultimately save our clients money. We have been introduced to projects from their inception or brought in at a mid-point to elevate performance.

## Services

### Complex Site Project & Risk Management



### Landfill Closure and O&M Experience



### Project Cost and Schedule Controls



### Strategic Planning



### Brownfields & Redevelopment



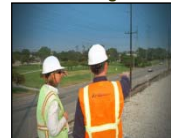
### Regulatory Negotiations



### Contracting Strategy



### Consultant/Contractor Oversight



### Relationship Management



## Relevant Experience



Newark Bay Site  
New Jersey



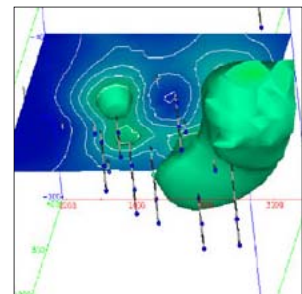
Confidential Superfund Site  
New Jersey



Florence Landfill  
New Jersey



Old Berthpage Landfill  
New York



MAR Services  
Louisiana



Tex Tin Site  
Texas

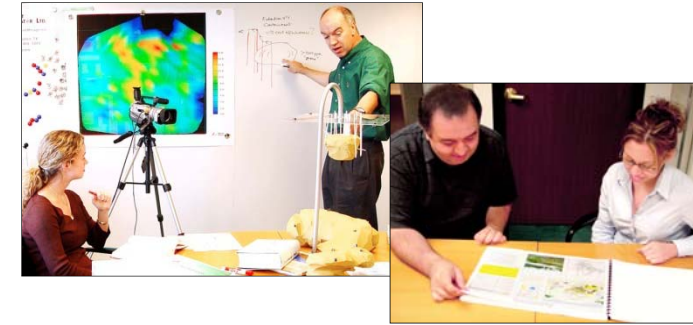


PAB Oil & Chemical Service, Inc.  
Louisiana



Malone Superfund Site  
Texas

## Project Navigator-Atlantic's Key Strengths



We have vast experience in the coordination of remediation projects while simultaneously maintaining our clients' relationships with EPA and the local regulatory bodies.

Our Project Coordination capabilities include:

- Excellent negotiators/advocates with regulatory agencies and the public
- "Best-in-class", strategic-thinking, environmental personnel
- Creative problem solvers
- Experts in data assessment and interpretation
- GIS and data analysis
- Quick problem solvers via generation of conceptual remediation designs
- Highly adept at risk management
- Ability to handle and distill large amounts of technical data
- Experts at providing clients with a range of strategic options
- Project scoping and bidding services
- Value engineering and design
- Use of web-enabled project management at [www.projecttoolbox.com](http://www.projecttoolbox.com) for decision-making facilitation
- High level of experience at major Superfund and RCRA sites
- Experience in brownfields and redevelopment
- Alternatives analysis and remedy selection

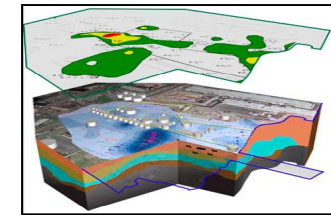
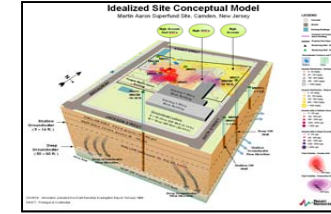
## Operating Mantras

We work hard to understand the internal culture and business objectives of our clients, so we can act not only as technical advisors on your projects, but also perform as advocates for remediation philosophies such as risk-based closure approaches.

We see our mission as one of helping the client devise a plan, then during the execution of that plan, controlling its costs, scope creep, schedule and execution risks.

Our company is small enough to provide dedicated project management services, yet deep enough to allocate additional highly trained personnel at critical junctures.

## Visual Navigator, Ltd.



Visual Navigator, Ltd. (VNL) is a sister company of PNA. Both companies are strong advocates of visualizing project data and information. We believe that stakeholders can make better and faster decisions if they can clearly visualize the project pathway.

We work on complex projects that generate large amounts of data and information. Utilizing the 80/20 rule, our team determines what information is essential for success and then visualizes it. Subsequently, the data can be more quickly and easily understood. VNL is a blend of graphic design and scientific and engineering personnel that accurately facilitate the decision making process in order to advance the project.

Visual methods are effective in contributing to overall 'big picture' thinking. Additionally, project visuals facilitate stakeholder alignment and lead to a heightened awareness of project goals at all levels in the project team.

VNL services include:

- Site Conceptual Models (SCMs)
- GIS-EVS analysis
- Litigation support graphics
- Project technical explanation graphics
- 3D information visualizations
- Storyboarding the project sequence
- Scale models
- End-State Vision graphics (ESVs)
- Digital animations

## PNA's Approach

Our problem solving approach involves close coordination and interaction with our client. Early project scoping meetings are held where the client's objectives are determined. Project Navigator-Atlantic's approach involves leveraging the use of existing site data to produce forward-looking plans. We operate with a strong internal philosophy of only collecting the appropriate amount of data, since often, environmental remediation projects are overstudied prior to remediation. Our "data mining" can lead to the development of focused bid packages and better contracting strategies.