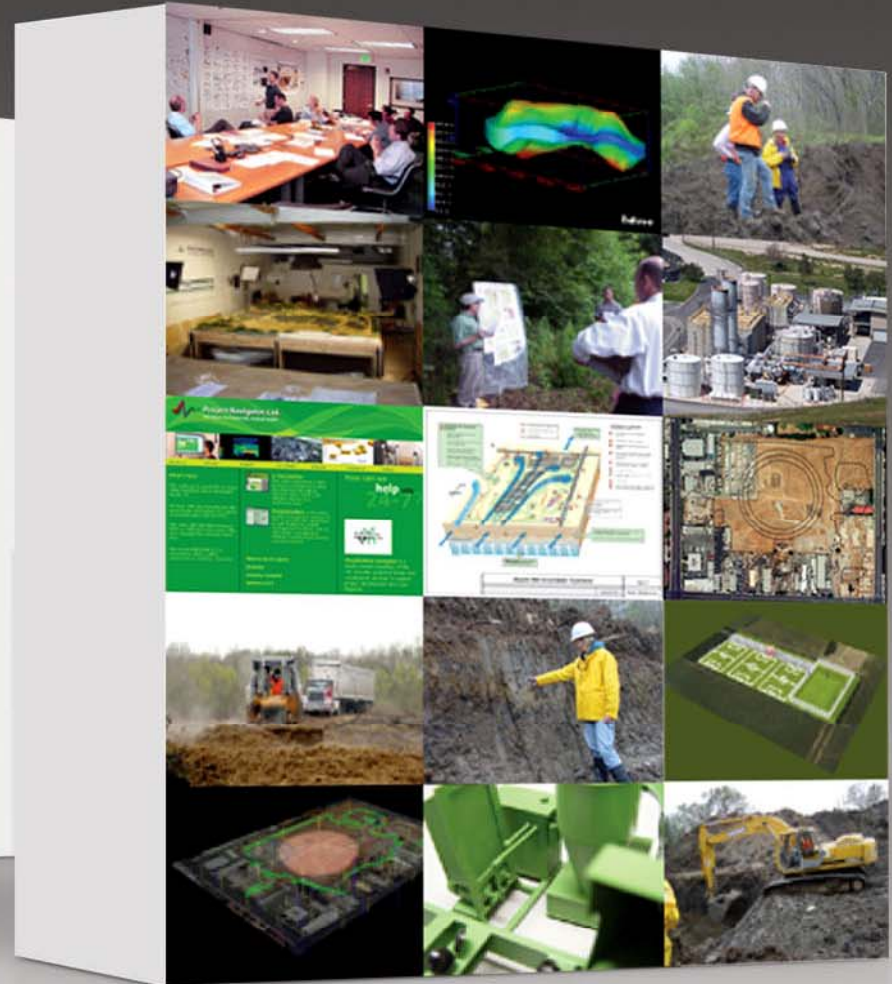
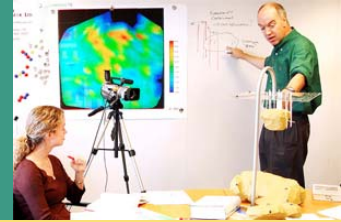


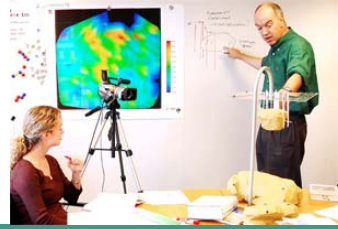
Project Navigator-Atlantic: A Snapshot View



PNA has six major offices:

- Malvern, PA
- Raleigh, NC
- Los Angeles, CA
- New York, NY
- Houston, TX
- Pleasant Hill, CA

Project Navigator-Atlantic: A Snapshot View



Project Navigator – Atlantic (PNA), the East Coast operating arm of Project Navigator, Ltd., is an **environmental knowledge, risk and resource management** company that has developed a strong track record for **creative problem solving**.

Stakeholders > Vision > Creativity > Solutions > Success

About PNA

CORE COMPETENCE

Environmental engineering and remediation.

PRIMARY SERVICE

Controlling the strategic direction of demanding projects.

NOTABLE PROJECT NAVIGATOR ACHIEVEMENTS

Lead project management responsibilities at more than ten major Superfund sites, where project costs have cumulatively exceeded \$200MM.

Services

- Stakeholder Alignment at Complex Remediation Projects
- Multi-party Site Management and Coordination
- Project Strategy and Planning Services
- Design and Construction Oversight
- Risk Management and Remediation
- Technically Rigorous Visualizations and 3D

PNA has 6 major offices:

- Malvern, PA
- Raleigh, NC
- Los Angeles, CA
- New York, NY
- Houston, TX
- Pleasant Hill, CA

Project Navigator – Atlantic (PNA): A Snapshot View

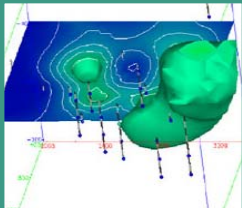


Stakeholders > Vision > Creativity > Solutions > Success

Project Navigator – Atlantic is the East Coast operating arm of Project Navigator, Ltd.



PNA is an environmental knowledge, risk and resource management company that has developed a strong track record for creative problem solving.



Our core competence is environmental engineering and remediation, and our primary service is controlling the strategic direction of demanding projects.



Project Navigator has had lead project management responsibilities at more than ten major Superfund sites, where project costs have cumulatively exceeded \$200MM.



PNA has 6 major offices:

- Malvern, PA
- New York, NY
- Raleigh, NC
- Houston, TX
- Los Angeles, CA
- Pleasant Hill, CA

Services Include:

- Stakeholder Alignment at Complex Remediation Projects
- Multi-party Site Management and Coordination
- Project Strategy and Planning Services
- Design and Construction Oversight
- Risk Management and Remediation
- Technically Rigorous Visualizations and 3D